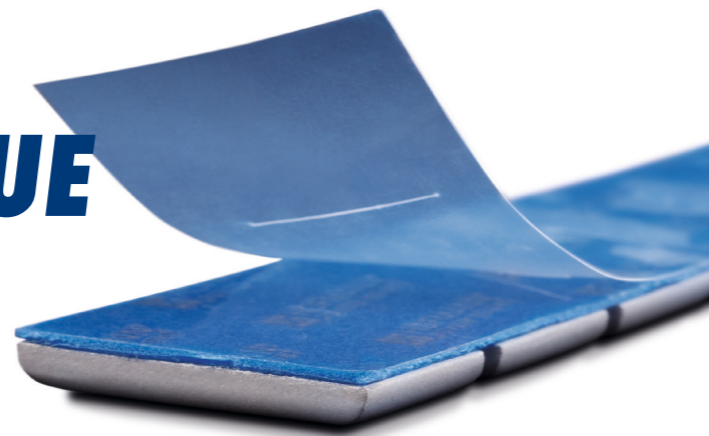


CIAO ADHESIVE RESIDUE

High final bond strength at OE level combined with residue-free removal thanks to patented SPEEDLINER® adhesive tape.



HOFMANN®
POWER WEIGHT

**FOR
MAXIMUM
EFFICIENCY**

**DURING WHEEL
CHANGES AND
BALANCING**



CONVENTIONAL ADHESIVE TAPE



SPEEDLINER ADHESIVE TAPE

**SPEED
LINER®**

THE PERFECT TRIO

- SPEEDCUT System
- Adhesive weight rolls
- SPEEDLINER®



YOU SAVE TIME ...

95 seconds
per wheel

6 that's over
minutes
per vehicle

... AND MONEY!

5 €
per vehicle
after deducting the additional
costs due to the higher roll price



**SCAN NOW
AND CALCULATE
THE SAVING
YOURSELF!**

Figures are based on averages and may vary depending on the workshop.

✓ **MORE SPEED** ✓ **MORE FLEXIBILITY** ✓ **FAIR PRICING**

HOFMANN®
POWER WEIGHT

HPW is a strong brand
of WEGMANN automotive.

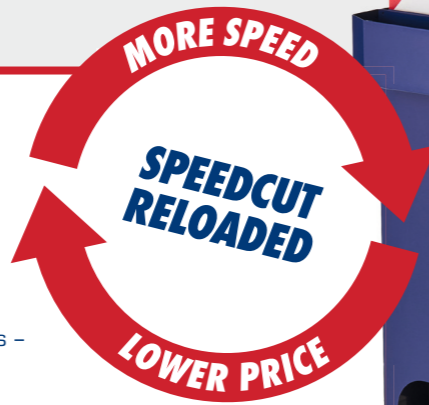
WEGMANN automotive GmbH
Rudolf-Diesel-Straße 6
D-97209 Veitshöchheim

Tel.: +49 (0) 931-3 2104-230
cseu@wegmann-automotive.com
wegmann-automotive.com

SPEEDCUT-SYSTEM

BECAUSE EFFICIENT BALANCING BEGINS WITH GOOD ORGANIZATION

- **Optimized for workshops:** Everything in one place – clean, handy, well thought out.
- **Extra versatile:** Can be adapted to your space requirements – rollholders for wall, balancing machine, or floor stand.
- **More speed:** Less searching, fewer trips, fewer tools – double blade and weight scale for precise gram measurements in seconds.



WORKSTATION

Optimized design and price

- 1x floor stand incl. SPEEDCUT double rollholder
- 2x hangable waste bins for protective film
- 1x inlay tray for storing up to four rolls

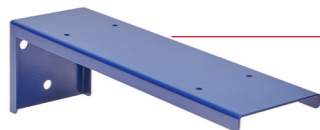
Part no.: 0401-1001-025

ROLL HOLDER

Can be mounted on a wheel balancer, wall, or floor stand

- Features a cutting edge and integrated weight scale
- Holds two rolls

Double roll holder 0401-1001-026
Single roll holder 0401-0023-150



WALL BRACKET

Space-saving and versatile solution

- L-shaped bracket with 3 holes for easy attachment to the wall
- Compatible with SPEEDCUT double rollholder – simply screw it on

Part no.: 0401-1001-027

MAGNET

Prevents the weight from rolling back

- Easy to attach to the underside of the scale

For steel rollers (Type 355) 0401-0023-156
For zinc rollers (Type 358/359) 0401-0023-157

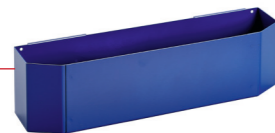


PROTECTIVE FILM WASTE BIN

For quick disposal of removed protective film

- Mounts directly on the SPEEDCUT

Part no.: 0401-0023-154

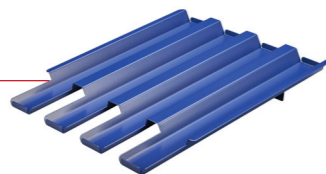


INSERT TRAY FOR 4 ROLLS

Provides convenient storage right at the workstation

- Insert into the floor stand

Part no.: 0401-0023-182



REPLACEMENT BLADE

Blade for cutting off adhesive weight segments

- Screw into the SPEEDCUT metal frame

For double roll holder 0401-0023-173
For single roll holder 0401-0023-152



ADHESIVE WEIGHTS

TYPE 355 2.0



Also available as a bar

Universal steel adhesive weight with 5g segments

- Trapezoidal segments for optimal conformation to the rim radius and a strong hold
- With SPEEDLINER adhesive tape: Can be removed without leaving residue, ideal for high processing speeds
- With ULTRALINER adhesive tape: Ultra-strong hold from the start – ideal for cold, dirty and matte rims

Material:	Steel (powder-coated)	
Dimensions:	Total height incl. adhesive tape: 3.8 mm Width: 19 mm	
Weight:	5 kg (1000 x 5g Segmente)	
SPEEDLINER® Part numbers:	silver	5355-0057-739
	black	5355-0058-739
	titanium grey	5355-0059-739
ULTRALINER® Part numbers:	silver	5355-0057-439
	black	5355-0058-439
	titanium grey	5355-0059-439

TYPE 358



OEM zinc weight with 2.5g segments

- Original part for AUDI, FORD, PORSCHE, VOLKSWAGEN, and VOLVO, among others
- With SPEEDLINER adhesive tape: Can be removed without leaving residue, ideal for high production speeds

Material:	Zinc	
Dimensions:	Total height incl. adhesive tape: 4 mm Width: 19 mm	
Weight:	5 kg (2000 x 2.5g segments)	
SPEEDLINER® Part numbers:	silver	5358-0020-736
	black	5358-0023-736

TYPE 375



Also available as a bar

Universal zinc adhesive weight with 5g increments

- Corrosion-resistant thanks to zinc – even in wet, cold, and dirty conditions
- With SPEEDLINER adhesive tape: Can be removed without leaving residue, ideal for high process speeds
- With ULTRALINER adhesive tape: Ultra-strong hold from the start – ideal for cold, dirty, and matte rims

Material:	Zinc	
Dimensions:	Total height incl. adhesive tape: 3.8 mm Width: 19 mm	
Weight:	5 kg (1000 x 5g segments)	
SPEEDLINER® Part numbers:	silver	5375-0050-739
	black	5375-0053-739
ULTRALINER® Part numbers:	silver	5375-0050-439
	black	5375-0053-439

TYPE 359



OEM-weight zinc wheel with 2.5g segmentation for narrow balancing marks

- Original part for BMW, MERCEDES-BENZ, MINI, and others
- With SPEEDLINER adhesive tape: Can be removed without leaving residue, ideal for high processing speeds

Material:	Zinc	
Dimensions:	Total height incl. adhesive tape: 6 mm Width: 15 mm	
Weight:	5 kg (2000 x 2.5g segments)	
SPEEDLINER® Part numbers:	silver	5359-0027-736
	black	5359-0028-736